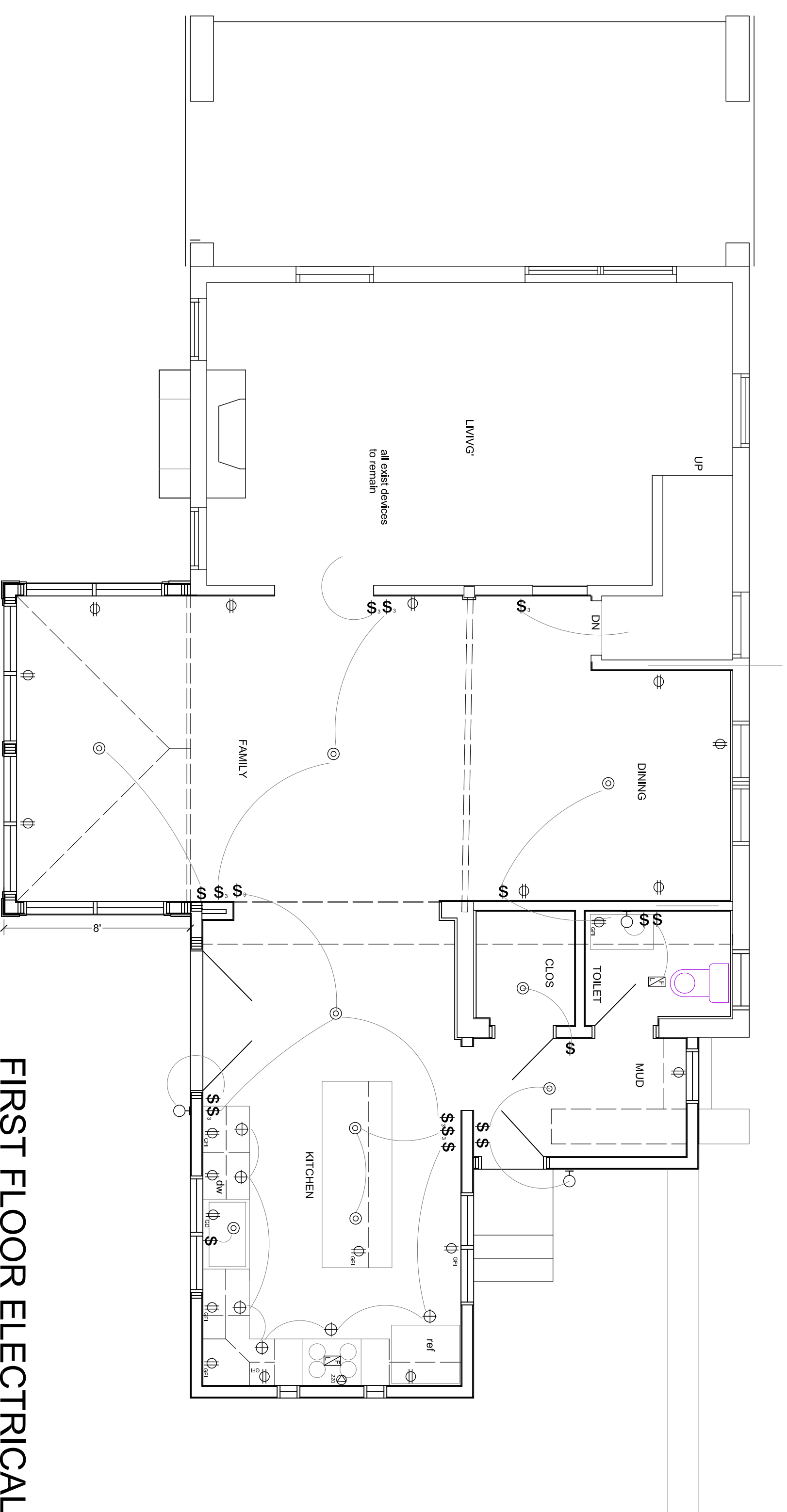


SECOND FLOOR ELECTRICAL PLAN
1/4" = 1'-0"



FIRST FLOOR ELECTRICAL PLAN
1/4" = 1'-0"

ELECTRICAL NOTES:

1. Contractor to field verify all existing conditions prior to work. Upon discovery of any discrepancies contact Architect prior to work.
2. Electrical panel is 200 amp. Balance panel to receive new work.
3. Verify final location of condensing unit & pads. Maintain existing devices not affected by new work. Re-circuit any affected devices.
5. Coordinate new equipment w/ location of all devices.
6. Coordinate final location of all light fixtures w/ framing.
7. Provide Fire-Stopping at penetrations as required.
8. All switch heights to be 48" to TOP , outlets at 18" , counter top at 40"
9. Field coordinate final location of all new switching.
10. New lighting and devices as selected by owner.
11. Smoke detectors to be hardwired.

- ELECTRICAL KEY**
- ⊕ DUPLEX OUTLET
 - ⊕_{OG} OUTLET-GROUND FAULT
 - ⊕_{SP} SPECIALTY OUTLET
 - ⊕_{WP} OUTLET-WEATHERPROOF
 - ⊕_{SP} SINGLE-POLE SWITCH
 - ⊕_{3W} 3-WAY SWITCH
 - ⊕_E EXHAUST FAN
 - ⊕_{4"} 4" RECESSED FLOOD
 - ⊕_{CANOPY} CANOPY LIGHT
 - ⊕_W WALL SCONCE
 - ⊕_{EF} EXHAUST FAN/ LIGHT
 - ⊕_{SD} SMOKE DETECTOR
 - ⊕_{WS} WALL SCONCE

JEFF LENEHAN
REGISTERED ARCHITECT
License RA071388X
1613 Vance Avenue
West Chester, PA 19380
484-620-2441
Email: jlenehanjrff@jehco.com

Project
ADDITION AND
RENOVATION FOR
2500 WILSON PARK
NARBERTH, PA

Drawing Title
ELECTRICAL PLANS

Revisions:

Date: 7/24/2016
Scale: AS NOTED

Drawing No.

A-5